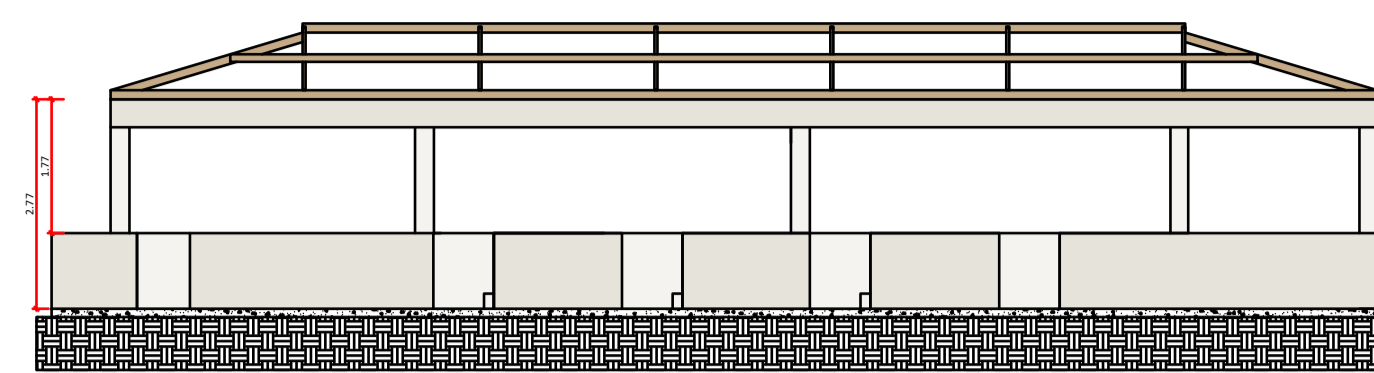
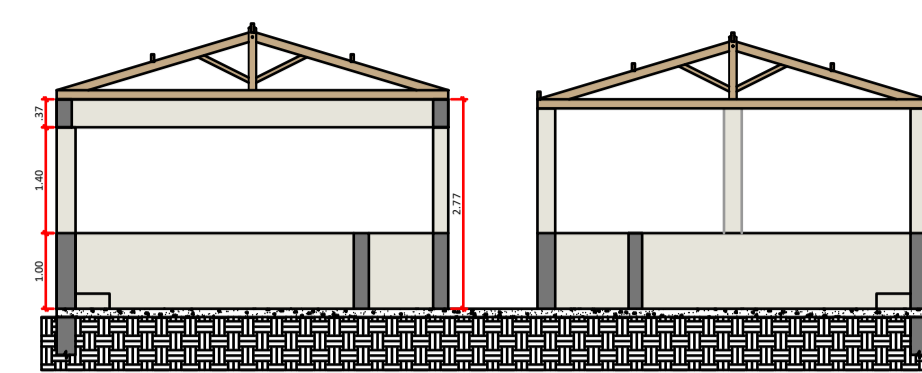


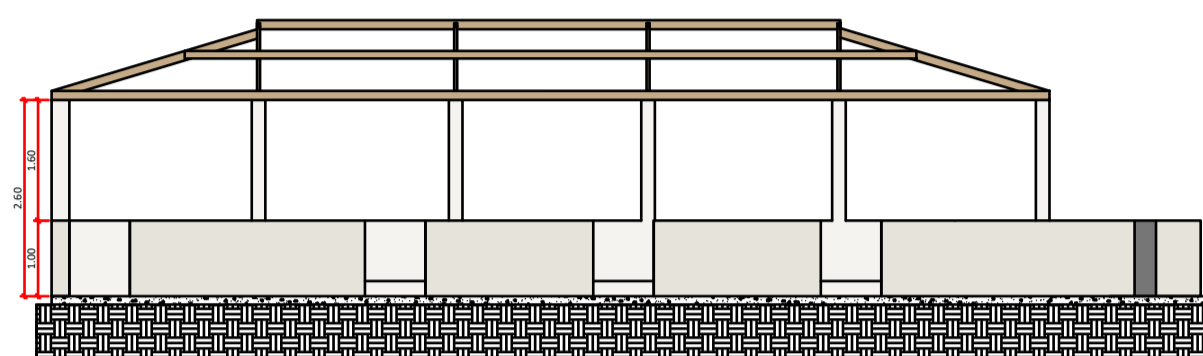
PLANTA - EDIFICAÇÃO EXISTENTE
ESC.: 1:100



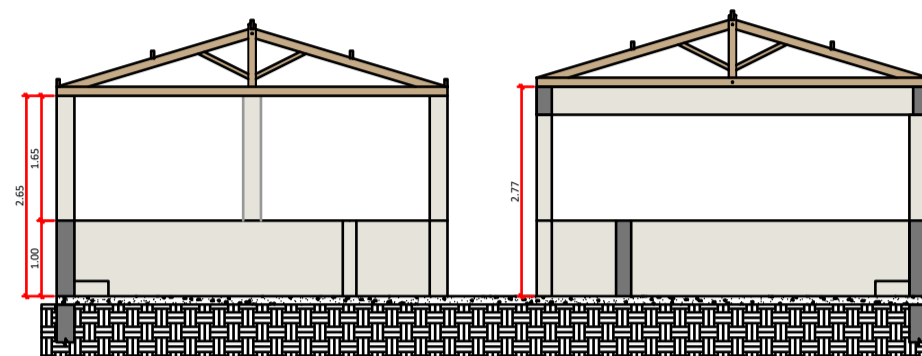
CORTE A-A EDIFICAÇÃO EXISTENTE
ESC.: 1:100



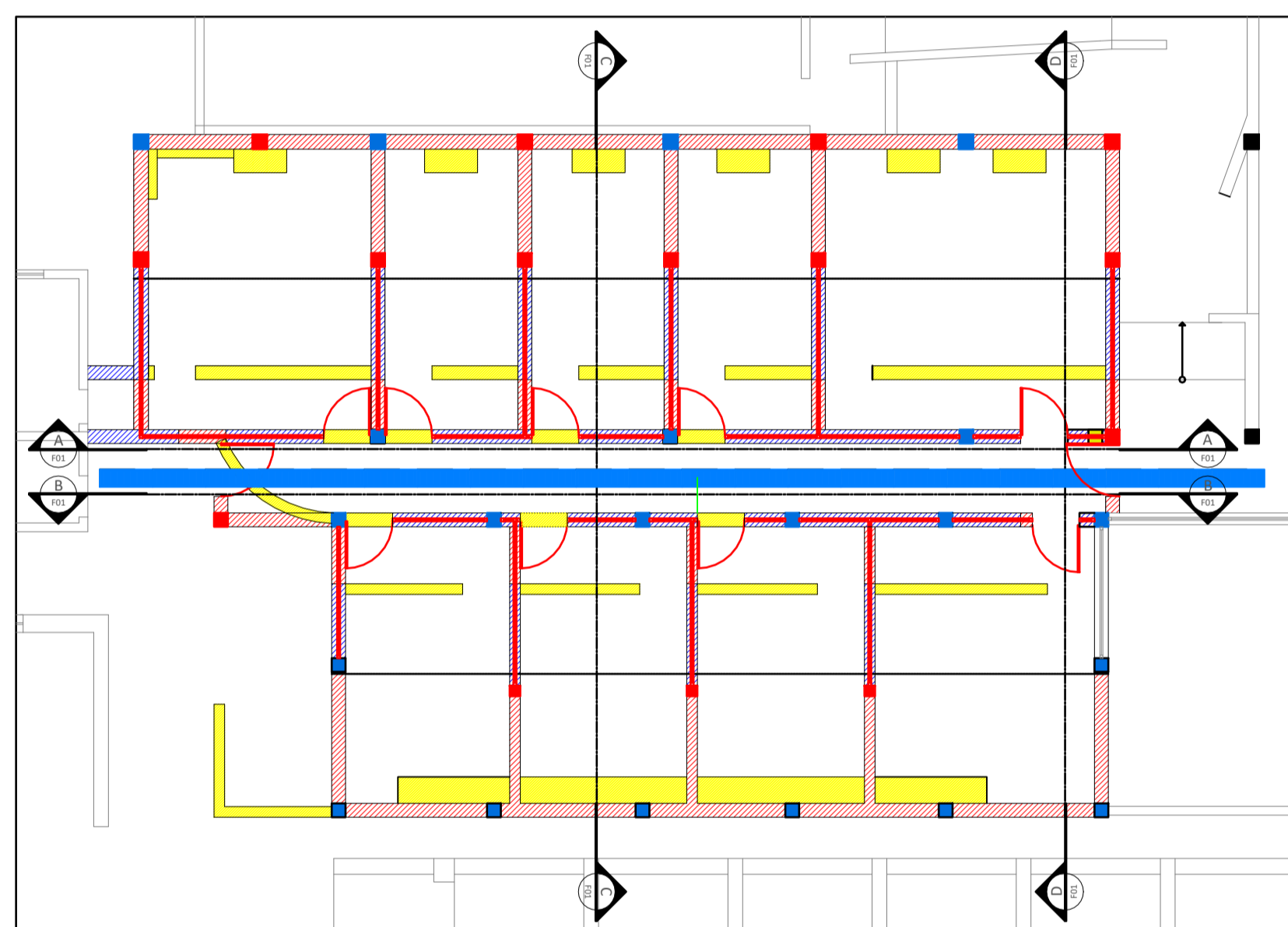
CORTE C-C EDIFICAÇÃO EXISTENTE
ESC.: 1:100



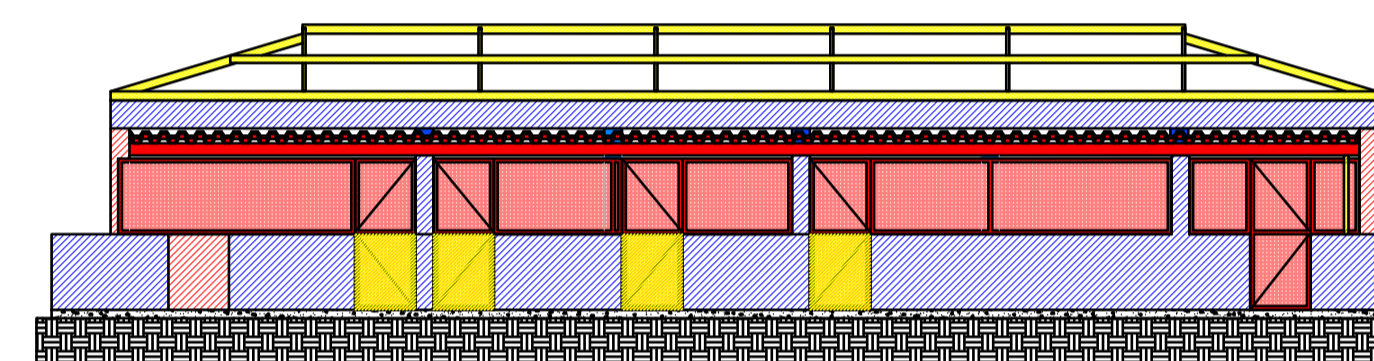
CORTE B-B EDIFICAÇÃO EXISTENTE
ESC.: 1:100



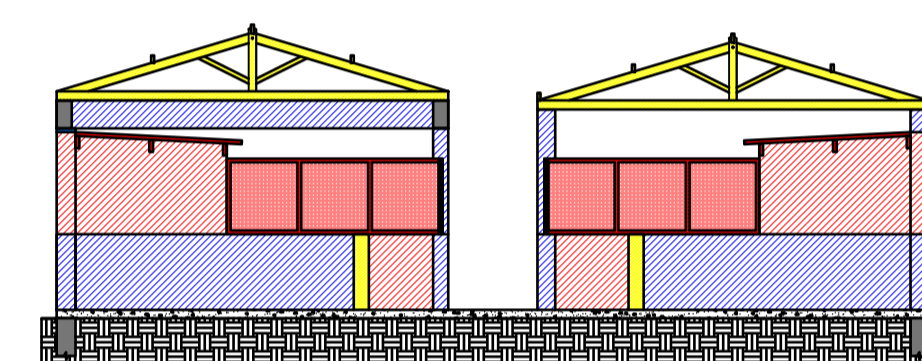
CORTE D-D EDIFICAÇÃO EXISTENTE
ESC.: 1:100



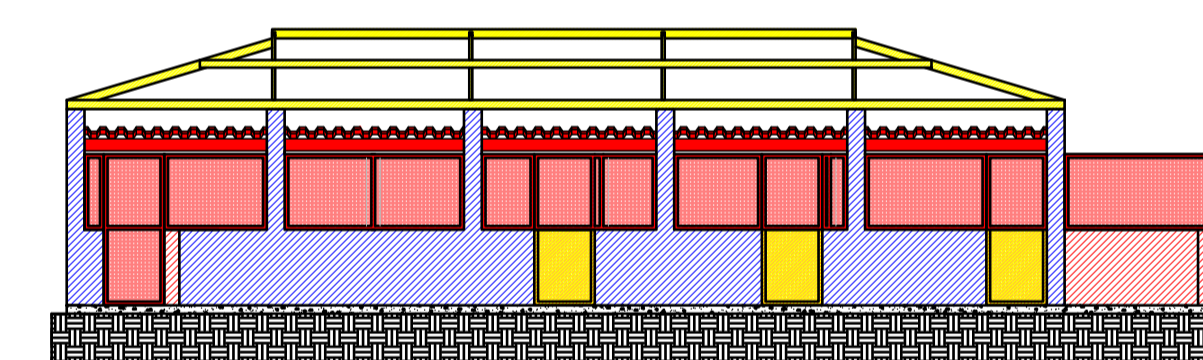
PLANTA
ESC.: 1:100



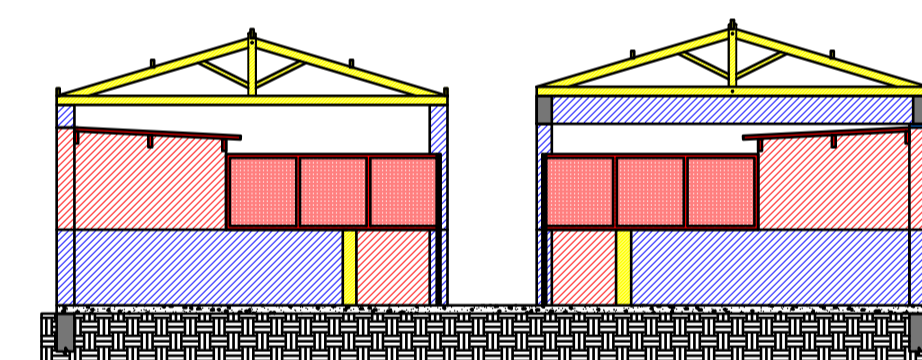
CORTE A-A REFORMA
ESC.: 1:100



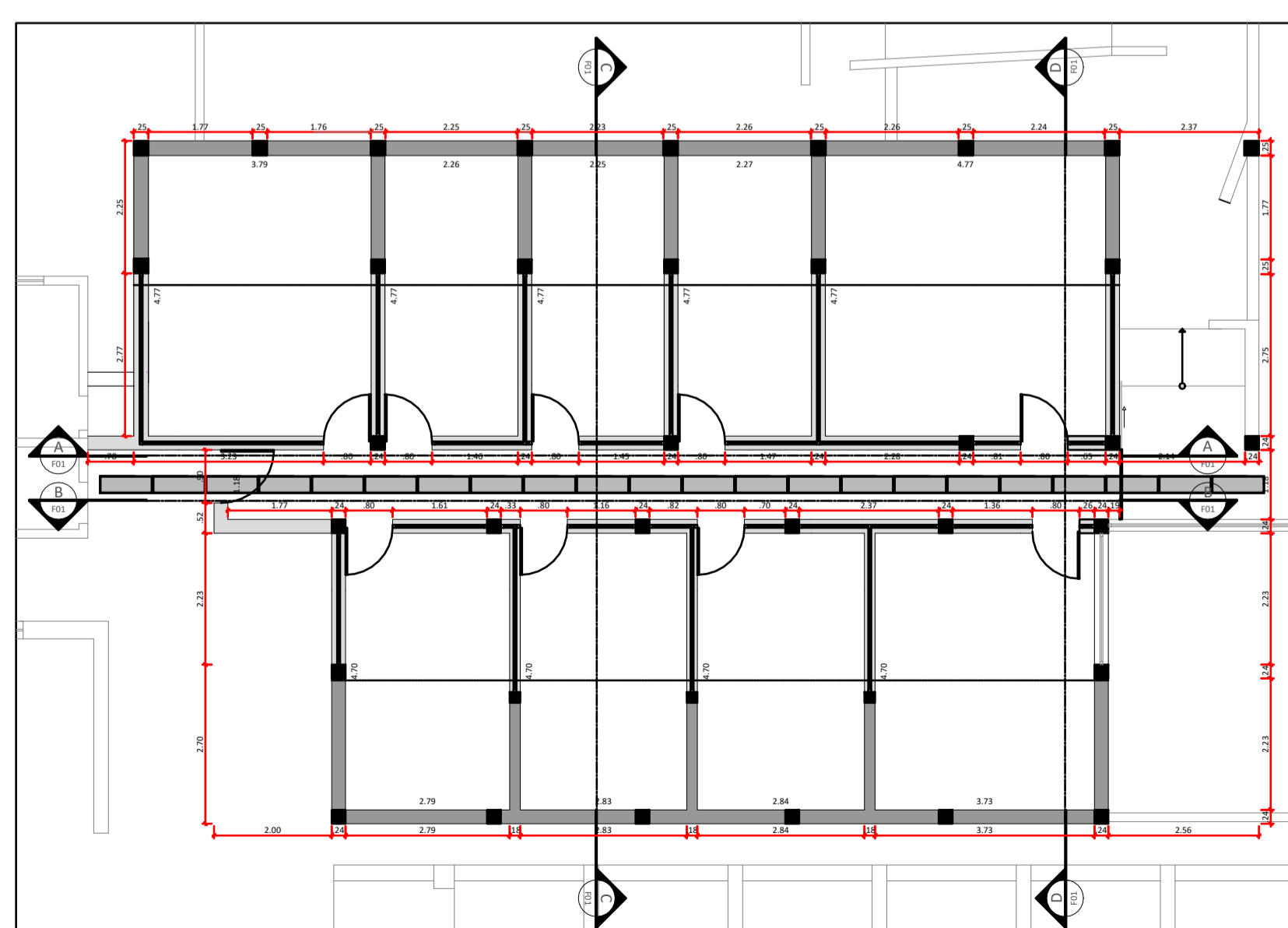
CORTE C-C
ESC.: 1:100



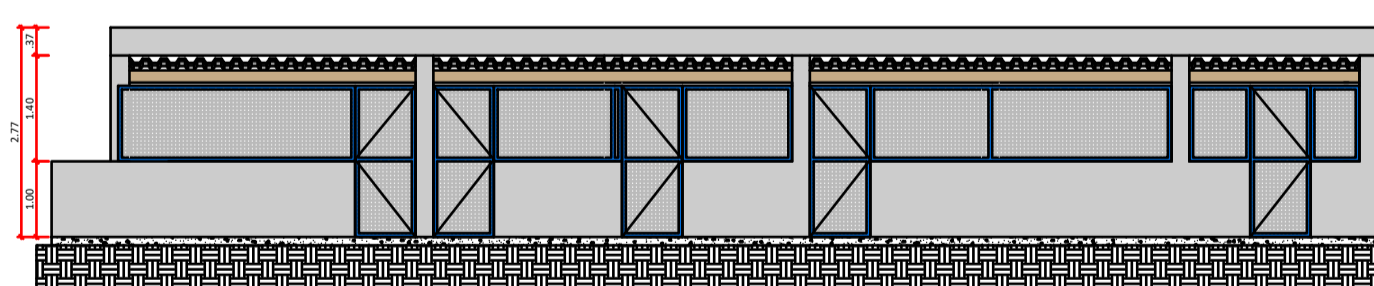
CORTE B-B REFORMA
ESC.: 1:100



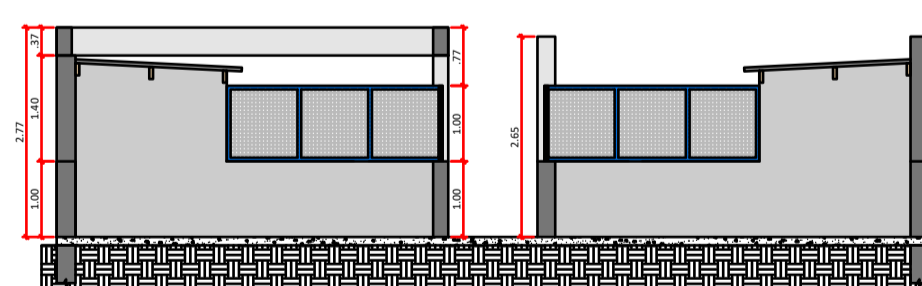
CORTE D-D
ESC.: 1:100



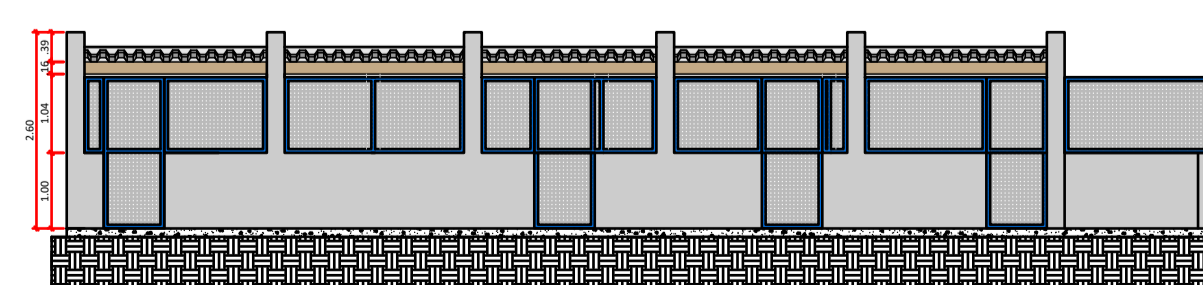
PLANTA
ESC.: 1:100



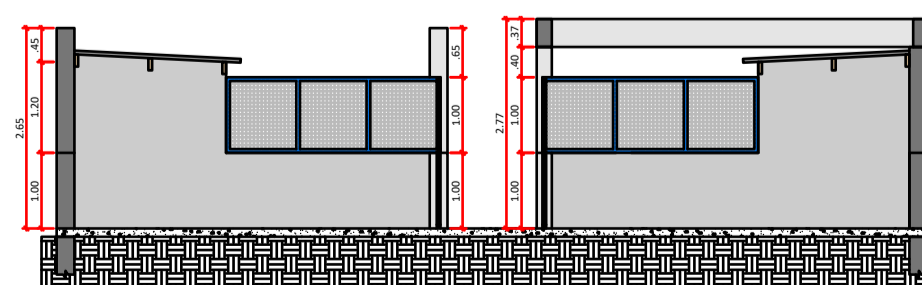
CORTE A-A REFORMA
ESC.: 1:100



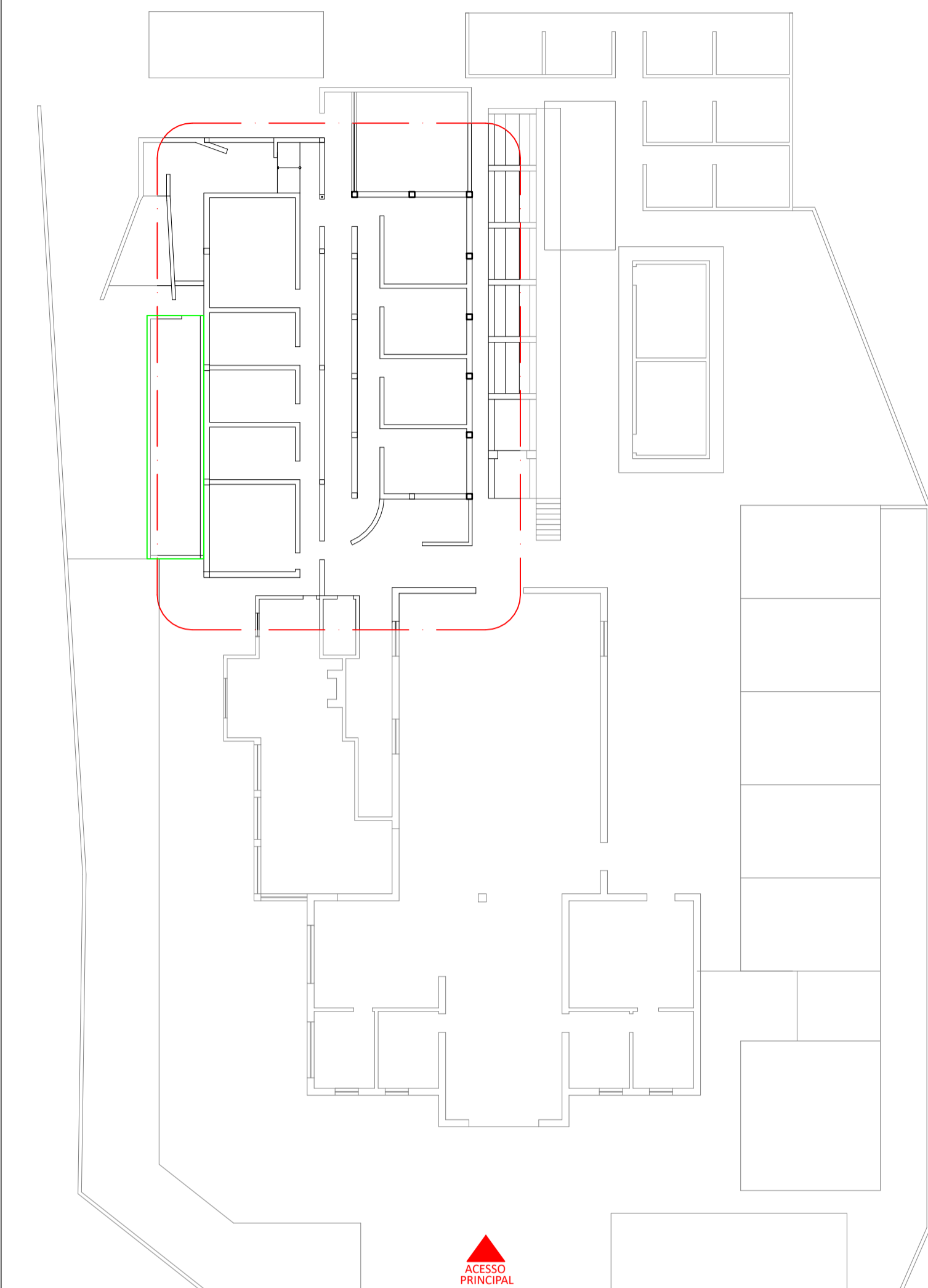
CORTE C-C
ESC.: 1:100



CORTE B-B REFORMA
ESC.: 1:100



CORTE D-D
ESC.: 1:100



PLANTA DE SITUAÇÃO
ESC.: 1:200

LEGENDA	
█	EXISTENTE
█	DEMOLIR
█	CONSTRUIR
█	REGULARIZAR



PREFEITURA DO MUNICÍPIO DE JAHU
SECRETARIA DE HABITAÇÃO E PLANEJAMENTO URBANÍSTICO

Obra: REFORMA E ADEQUAÇÃO DE BAIAS PARA CÃES E GATIL NO CANIL MUNICIPAL
Local: ROD. COMANDANTE JOÃO RIBEIRO DE BARROS, KM 180, JAHU/SP

JORGE IVAN CASSARO
PREFEITO DO MUNICÍPIO DE JAHU

RESPONSÁVEL TÉCNICO
ANA PAULA MODOLO SANTOS
ENGENHEIRA CIVIL
CREA Nº 506058606
MAT. Nº 990602

Arquivo Canil Municipal	Rev. 0	Escala INDICADAS	Estudo JUNHO/2024	Fl. 02/02
----------------------------	-----------	---------------------	----------------------	--------------